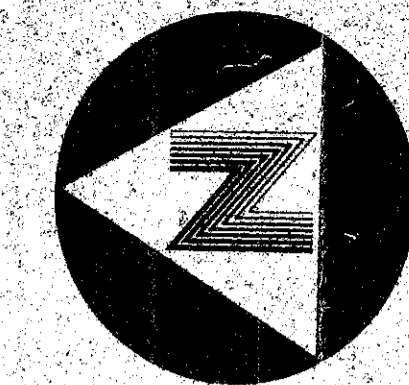


40-167

# TARTAN LAKES, PLAT NO. 1 (P.U.D.)

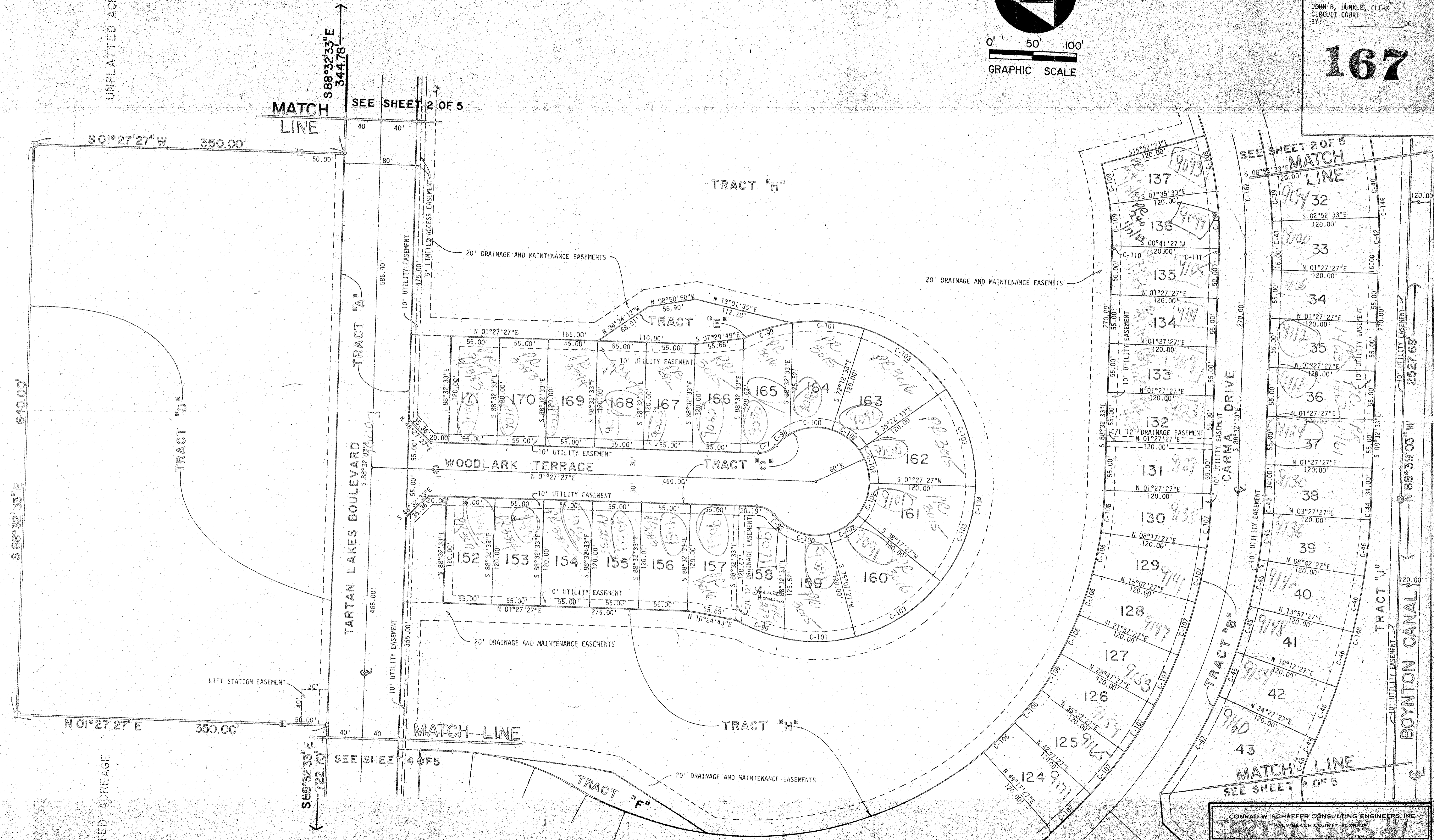
BEING A REPLAT OF PART OF BOYNTON GARDENS, ACCORDING TO THE PLAT THEREOF, AS RECORDED IN PLAT BOOK 6, PAGE 32, PUBLIC RECORDS, PALM BEACH COUNTY, FLORIDA, AND LYING IN SECTIONS 14 AND 23, TOWNSHIP 45 SOUTH, RANGE 42 EAST, PALM BEACH COUNTY, FLORIDA. MARCH, 1980



0' 50' 100'  
GRAPHIC SCALE

STATE OF FLORIDA  
COUNTY OF PALM BEACH  
THIS PLAT WAS FILED FOR  
RECORD AT \_\_\_\_\_ M.  
THIS \_\_\_\_\_ DAY OF \_\_\_\_\_  
A.D. 1980, AND DULY RECORDED  
IN PLAT BOOK \_\_\_\_\_ PAGES  
\_\_\_\_\_ AND \_\_\_\_\_  
JOHN B. DUNKLE, CLERK  
CIRCUIT COURT  
BY: \_\_\_\_\_ DC.

# 167



UNPLATTED ACREAGE

UNPLATTED ACREAGE

THIS INSTRUMENT WAS PREPARED BY ROBERT J. WHIDDEN, IN THE OFFICES OF BENCH MARK LAND SURVEYING & MAPPING, INC., 2833 EXCHANGE COURT, WEST PALM BEACH, FLORIDA 33409. PHONE: (305) 689-2111

CONRAD W. SCHAEFER CONSULTING ENGINEERS, INC.  
PALM BEACH COUNTY, FLORIDA

**BENCH MARK**  
land surveying and mapping, inc.

DATE	BY	CHECKED	JOB NO.	REVISED
3-14-80	1-50		P2505	
				3 5

0316-004